



# American Institute of Professional Geologists Michigan Section

April 2011

---

## From the President's Desk

The AIPG Foundation is an organization involved in raising and distributing funds for the improvement of the study of geology in the educational system and geology as a profession. It appears that the AIPG Foundation has had experiences similar to our own when it comes to soliciting interest and awarding education grants. The Foundation typically awards grants to applicants on a matching funds basis. However, due to changes within the Foundation, they are using a different approach to distribute funds for 2011. Earlier this month the AIPG Michigan Section received a request from the AIPG Foundation to help with the improvement of geological education in our area. What is pleasantly unique about this request is that it came with \$4,000 worth of no-strings-attached funding. Our job is to see that these funds get put to good use. The Section Executive Committee will be meeting to discuss the grant and assess how to proceed.

I believe that the Foundation's experience, as well as our own, is representative of a larger issue related to lack of recognition regarding the importance of geology as an academic subject and those who have chosen it as a profession. The examples are many and are found locally as well as nationally. Local examples are easily recalled: lack of a state Professional Geologist licensure program; Michigan State University coming perilously close to eliminating the geology department; and recent environmental legislation that nearly excluded geologists as being qualified to sign off on certain environmental reports. At the national AIPG meeting this past September I heard similar accounts from other section members, national committee members and representatives from other geologic organizations. A representative from the American Geologic Institute shared the following: for admission purposes, earth sciences are perceived by most colleges as non-rigorous, non-laboratory courses; there is a lack of earth science advanced placement courses; and there is little career mentoring at the college/university level. This last item may help explain the estimate of only 13% of

people who receive an earth science degree end up in an earth science profession.

Many of the issues brought up at the national level are beyond the purview of either our Section or us as individuals. However, there are areas where our efforts can produce results. To our Sections' credit, we have been active and achieved results in some of these areas. I believe that the Michigan Section is ahead of the curve with respect to the development of AIPG student chapters. Now that some student sections are established, we should strive to maintain contact and be a mentoring resource. Our awarding of educational grants is commendable but the interest from the educational system has often been tepid. Given the current economic climate, I would think educators would be eager to have a chance for such grants. Either they do not know about the grants or do not have geologic related educational ideas they feel are worth pursuing. In either case, we can be a resource by educating the educators. These are important areas for our membership to be actively engaged.

In listening to members from other sections at the national meeting, I came to a greater appreciation that we have an active and vibrant membership. I am hopeful that we will continue the good work.

Don Conway, CPG – 2011 Michigan Section President

---

## Section Officers Reports

President: Information presented in the "From the President's Desk" article above.

Vice President: Nominations for the election for 2012 Secretary are being accepted. Please consider getting more involved with the Section. The effort is minimal and the rewards are tremendous. What better way to show your commitment to the profession than to get involved and strengthen geological sciences as a profession.

Treasurer: Details of the Section accounts are summarized in the Secretary's report.

Secretary: December 2, 2010 Executive Committee meeting minutes are as follows:

I. Call to Order: 4:00 PM

Attendees: Jason Lagowski, Don Conway, Dawn Prell, Craig Savage, Adam Heft, and John Barkach (at 4:30).

II. Treasurer's Report. Dawn Prell reported that the Section account balance is approximately \$16,000 plus funds distributed across five certificates of deposit.

- Dawn will arrange to meet with new treasurer, John Barkach, to go over the financials with him during the week of March 7.
- Checks with congratulatory letters were sent out last week to the reward recipients selected during the December meeting.
- Education grants were issued to Kentwood and Ann Arbor Schools.
- Tax statements for 2010 were discussed. Dawn will complete the 2010 tax forms and submit to National by March 30.

III. 2011 AIPG National Meeting. Don Pyles, President of the Illinois/Indiana Section, has requested our Section's support in networking with other members and professional colleagues, vendors, regulators and the academic community to encourage attendance, participation and submittals of abstracts for the 2011 AIPG/AIH Annual Meeting on September 10-13. Anyone interested in helping out by serving on the marketing committee should contact Dave or an executive committee member.

IV. 2011 AIPG Section Meetings. The following meetings are tentatively scheduled for 2011:

- March 3, 2011, Causeway Bay Hotel, Lansing, MI - Completed
- May 19, 2011, Radisson Hotel, Grand Rapids, MI (need 50 people to obtain waiver of \$600 meeting room fee)
- September 22, 2011, University Center, Mt. Pleasant, MI
- December 1, 2011, Webers' Inn, Ann Arbor, MI

Guest speakers were lined up for the March meeting, but we still need to identify speakers for the May, September and December meetings. Discussed possible speakers associated with the mining industry, experts on Antrim Shale issues, Army Corps of Engineers speakers on sediment dredging/depositing issues, etc.

V. March 3, 2011 Section Meeting. Patty Brandt and Rhonda Klann, MDEQ. Patty provided an update on the December 2010 modifications to the remediation processes regulated under Part 201 of the Michigan Natural Resources and Environmental Protection Act, 1994 P.A. 451. Rhonda Klann spoke specifically on the changes to the Baseline Environmental Assessment program related to the Part 201 amendments.

VI. Newsletter: Ty Black has retired as assistant newsletter editor. Adam Heft is now doing the entire newsletter alone and is seeking someone to volunteer to help as an Assistant Editor and prepare the quarterly newsletter. For 2011, the remaining newsletters are scheduled for distribution on April 15, July 8, and October 14. Articles and information need to be in one week prior to distribution.

VII. 2011 Golf Outing: Kevin Lund is heading the committee for planning the AIPG 2011 golf outing, scheduled to be at the Lyon Oaks Golf Course in Wixom on May 10. Kevin is also coordinating a MDEQ co-sponsored training session that is tentatively schedule at the MDEQ training center on Higgins Lake, June 22-24, 2011. Kevin will distribute information regarding location and content of the training session to the membership when it becomes available.

VIII. Status of Student Chapters: John Barkach announced a new student chapter at Wayne State University to add to the existing chapters at Central and Eastern Michigan Universities. Michigan State University is interested but the chairman of the geology department is unable to commit any personal or staff time to implement it. It was noted that student memberships are free now.

IX. Next Meeting: The next meeting is scheduled for May 19, at a location to be confirmed in Grand Rapids.

X. Adjournment – 5:30 p.m.

---

## Coming Events

**May 5-6, 2011:** AIPG 3<sup>rd</sup> Annual Emerging Issues in Water Resources Conference, The Shores Resort and Spa Hotel, Daytona Beach, Florida.  
<http://www.aipg.org>.

**May 10, 2011:** AIPG 7<sup>th</sup> Annual Golf Outing at Lyon Oaks Golf Course. Details of the outing are included in the flyer attached to this newsletter.

**May 19, 2011: AIPG Section Meeting:** "Regulatory Response in Michigan Oil and Gas Production due to the Collingwood Shale Development" by Rick Henderson – OGS Cadillac District Supervisor, Susanne Biteman – Area Geologist - Cadillac, and Bill Duley – Area Geologist - Cadillac.

Location: Radisson GR Riverfront, 270 Ann Street NW,  
Grand Rapids.

Dinner: Buffet.

Schedule: Cash Bar 5:30-6:30 PM, Dinner 6:30 PM, and  
Speaker 7:30-9:00 PM.

Cost: Students free, Members \$35.00, Non-members  
\$40.00.

**RSVP by May 17, 2011:** RSVP to Craig Savage at  
[csavage@gfnet.com](mailto:csavage@gfnet.com). Please remember to include your  
meal choice. Notice by e-mail is preferred, and please  
include AIPG in the subject line. Craig can also be  
reached at (734) 753-5880.

**August 12-13, 2011:** Michigan Section AIPG Annual  
Field Trip, Northeast Michigan Karst Features, Alpena  
Glass Bottom Boat Shipwreck Tour, and Rockport  
Quarry. Details included on flyer attached to this  
newsletter. Contact Sara Pearson to RSVP by July 25,  
2011.

**September 10-13, 2011:** AIPG Annual Meeting, Hilton  
Chicago Indian Lakes Resort, Bloomingdale, Illinois.  
<http://www.aipg.org>.

**September 16-18, 2011:** MBGS Field Trip to Marquette  
area, Michigan. MBGS will host a geologic field trip to  
Upper Peninsula of Michigan to look at Precambrian  
rocks that range in age from 3.2 Ga (or more) to 1.0 Ga  
years, and represent some of the oldest known rocks in  
the North American continent. The trip will be led by Dr.  
Robb Gillespie from Western Michigan University with  
help from Mark Wollensak, Mark Nida, and others.

**October 9-12, 2011:** Geological Society of America  
Annual Meeting & Exposition, Minneapolis, Minnesota.  
<http://www.geosociety.org/meetings/2011>.

---

## Annual Golf Outing

Now is the time to sign up! Open registration for  
participation/sponsorships ends April 29, 2011.  
Sponsorships and spots for golfers are available, but  
are going fast. To assist in planning, register early.

Please remember the AIPG K-12 Education Grant  
Fund has provided thousands of dollars to a variety  
of worthy projects, made possible in part by the  
money raised through our annual golf outing. Your  
generosity has been, and will continue to be, the key  
to enabling organizations/schools to provide  
meaningful environmental educational programs and  
activities in the Geosciences.

Thank you for your support!

Bob Reichenbach, CPG and Kevin Lund, CPG –  
Michigan Section Golf Outing Co-Chairs

---

## March Section Meeting Summary

The Michigan Section AIPG's last meeting was held  
on March 3, 2011 at the Causeway Bay Hotel in  
Lansing. Patty Brandt and Rhonda Klann of the  
MDEQ were the featured speakers, and presented  
information on recent amendments to Part 201  
regulations. The presentation was timely, and

included a summary of changes to the BEA process,  
no further action process, and reviewing response  
actions.

The Michigan Section AIPG greatly appreciates the  
willingness of MDEQ staff to speak with our  
members on these topics, and allow those working in  
the environmental practice area to maintain their  
edge. Thank you Patty and Rhonda!

---

## National Executive Committee Update

I have only a couple of minor bits of information for  
this newsletter edition regarding the National  
Executive Committee, and these are also  
summarized in the March/April issue of TPG. These  
include the change of name to the "Member"  
category to "Professional Member." This change  
was made because everyone belonging to AIPG is a  
member; this change better distinguishes those  
members that are not also CPGs.

Also, the category of Young Professional Member  
was created. This is for those members that have  
recently graduated, and provides a stepping stone to  
the Professional Member category, primarily with  
reduced dues (one-half the rate of Professional  
Members) to encourage recent graduates to  
continue their membership with AIPG.

Finally, as a reminder and clarification to our  
members, the Student Member category has no  
dues requirement. Prior to 2011, dues for students  
were minimal or free depending on how/where the  
students were enrolled as members. Going forward,  
students pay no dues while attending school.

Adam Heft, CPG –Michigan Section Newsletter  
Editor and 2010-11 National Secretary

---

## Protect the CPG Designation!

Those members of AIPG who have earned the right  
to use CPG after their name appreciate the hard  
work and experience that went into the effort to  
obtain this certification. Members should be aware  
that the CPG designation is occasionally misused by  
individuals that are not part of AIPG or of AAPG,  
another organization that uses this designation.

It was recently brought to the attention of AIPG  
officials that a certain Michigan geologist has been  
using the CPG designation. This individual is not  
now, nor has he been, a member of AIPG (or  
AAPG), although he is a licensed geologist in  
Indiana.

The individual has been sent a cease and desist  
letter from National requesting he stop using the  
CPG designation, and reminding him that the proper  
designation for licensed geologists is "PG" or "RG,"  
depending on the state.

The CPG designation is copyrighted by AIPG. Only members of AIPG or AAPG should use CPG. Our members should be vigilant and report improper use of the CPG designation to AIPG officers, who investigate claims of this nature and act upon them. Otherwise, the public and regulators are unlikely to know which individuals have the experience and are entitled to use the CPG qualification.

---

## Welcome New Members

The Michigan Section is continuing to grow. Please welcome the following new CPGs, members, and students:

Claire Astore, Daniel Gold, Ray Hoin, Matt Mahony, Elizabeth Koeman, and Stephen Shields.

To each of our new members, the Michigan Section Executive Committee would like to welcome you to our section, and encourage you to attend section meetings and other events. You are also welcome to provide information for the Member's Corner articles.

---

## DEQ Tracks New Response Activity and No Further Action Plans

Since the Part 201 Amendments went into effect in December 2010, the DEQ has implemented a tracking system to evaluate the number of new Response Activity Plans (RA Plans) and No Further Action (NFA) documents received and the progress of reviews under the new response deadlines. The DEQ is tracking this information quarterly and at the completion of the first quarter of 2011, the DEQ had received numerous RA Plans and some NFAs. So far the DEQ has received 89 RA Plans and 5 NFAs. These numbers reflect reports from all DEQ districts across the state. The majority of the RA Plans have been submitted for the Enbridge oil spill in Marshall, Michigan.

### Reminders about New Forms

When submitting a RA Plan, an RA Plan Form must accompany the document. The report form is available on the DEQ's website at

[http://www.michigan.gov/documents/deq/deq-rrd-ResponseActivityPlanSubmittalForm-3-2-11\\_346891\\_7.doc](http://www.michigan.gov/documents/deq/deq-rrd-ResponseActivityPlanSubmittalForm-3-2-11_346891_7.doc).

This form requests the review of the RA Plan and any document being submitted to comply with Section 20114b of Part 201 must have this form. The types of plans that may be submitted with this form include remedial investigations, evaluation plan, feasibility study, remedial action plan, interim response plan, site specific criteria, mixing zone requests, Section 20118(5) and (6) requests, institutional controls, due care plans, and proposals

for in-situ injection. Mixing zone requests and in-situ remediation proposals must be submitted due to statutory requirements for approval by the department.

The NFA Plans to comply with Section 20114d of Part 201 must also be accompanied by a form which is available on the DEQ's website at [http://www.michigan.gov/documents/deq/deq-rrd-PART201-NoFurtherActionSubmittalForm-3-7-11\\_347040\\_7.doc](http://www.michigan.gov/documents/deq/deq-rrd-PART201-NoFurtherActionSubmittalForm-3-7-11_347040_7.doc).

All Baseline Environmental Assessments (BEAs) are required to be submitted with a new form. This form is also on the DEQ website at [http://www.michigan.gov/documents/deq/deq-rrd-BEASubmittalForm\\_340537\\_7.doc](http://www.michigan.gov/documents/deq/deq-rrd-BEASubmittalForm_340537_7.doc).

### Upcoming Part 201 Amendment Training

On a final note, be sure to keep a look out for upcoming Part 201 Amendment training provided by the Remediation Division on the list server. Dates, times, and locations will be posted soon.

Sara Pearson, CPG, MDEQ RD Senior Geologist, Grand Rapids District

---

## Annual Meeting Reminder

The Section Executive Committee would like to remind its members that this year's annual meeting will be held in Bloomingdale, Illinois, from September 10-13, 2011. This meeting is a good time to network with your peers from across the country. It will be the last meeting for the next few years that will be within easy driving distance of Michigan, so plan to attend if at all possible. The Michigan Section has provided a \$250 goodwill sponsorship of the meeting.

---

## Support our Sponsors!

The Section Executive Committee would like to remind its members to support the companies that are advertisers in the newsletter. Consider working with these companies, and when you speak with their representatives, let them know that you saw their ad in the Michigan Section newsletter.

---

## Newsletter Notice via E-mail

Please be sure that you continue to receive the Section newsletters and other announcements. Submit an updated e-mail address to Adam Heft at [heft@pbworld.com](mailto:heft@pbworld.com). If you move or change places of employment, don't forget to send your new contact information to both the Section and to National. If you are not receiving announcements directly from the editor, it is because your email address is not up to date.

---

## Section Website Reminders

As you may have noticed, the Michigan Section is working on building a database of geologic photographs on our website. We would like to continue building this collection. Please submit photographs that you are willing to share to Adam Heft at [heft@pbworld.com](mailto:heft@pbworld.com). Don't forget to include your name and a short explanation of what the photograph depicts. The photographs will be periodically uploaded to the website once several have been received.

You will also note that the Section website now has a history page. Currently it includes information on Douglas Houghton, Michigan's first State Geologist. We will be including information on the Section's officers in the near future. If you have suggestions on other items that should be included on this page, please let a member of the Section Executive Committee know.

---

## Member's Corner

*The Member's Corner includes information about the Section's membership. This is your chance to provide information on where you are and what you are doing. Simply send the information to the Editor for inclusion in this section.*

*No Member's Corner submission was received for this edition of the newsletter.*

---

## Employment Opportunities

*To serve our members, and provide added value, the Michigan Section Executive Committee has decided to allow ads for employment opportunities to be posted in the Section newsletters. Employment ads will run for one edition unless renewed. There is no cost to our members or sponsors for this service. Send your employment opportunities to the editor.*

No employment opportunities were received prior to publication of this issue of the newsletter.

---

## World's Best Bad Jokes and Puns

What did the limestone say to the geologist?

Don't take me for granite.

## Newsletter Sponsors



# ADVENTUS

*Solid Technology, Superior Value, Proven Results*

2871 W. Forest Road, Suite 2,  
Freeport, IL USA 61032  
Toll-free: 888.295.8661  
Fax: (+01) 815.235.3506

[www.AdventusGroup.com](http://www.AdventusGroup.com)

## PEARSON DRILLING CO.

6100 West Blue Road (M-55) • Lake City, Michigan 49651

**William F. Pearson, P.E.**  
President

231-839-4444  
231-839-3678 Fax

Email: [wpearson@pearsondrilling.biz](mailto:wpearson@pearsondrilling.biz)  
[www.pearsondrilling.biz](http://www.pearsondrilling.biz)



SOIL AND GROUNDWATER REMEDIATION

IN SITU BIOREMEDIATION AND CHEMICAL OXIDATION

### ORC ADVANCED

- Field-Proven, *In Situ*, Enhanced Aerobic Bioremediation
- Low-Cost and Highest Available Oxygen Content
- Patented Controlled-Release Technology

### 3-D MicroEmulsion

HRC ADVANCED<sup>®</sup>

- Less than 47¢ Per Pound as Applied
- Three Stage Hydrogen Release Profile
- Wide-Area / High-Volume Microemulsion Application

### RegenOx<sup>®</sup>

CHEMICAL OXIDATION REDEFINED

- Rapid, *In Situ* Chemical Oxidation of Target Contaminants
- Safe and Easy to Handle Compared to other Chemical Oxidants
- Treats both Petroleum and Chlorinated Hydrocarbons

Local Representative - Barry Poling  
Central U.S. Regional Manager / (812) 923-7999 / [bpoling@regenesisc.com](mailto:bpoling@regenesisc.com)  
FOR MORE INFORMATION OR A FREE APPLICATION DESIGN  
AND COST ESTIMATE CALL 949-366-8000  
OR VISIT [WWW.REGENESIS.COM](http://WWW.REGENESIS.COM)



## REGENESIS

Advanced Technologies for Contaminated Site Remediation



Ph: 989-893-8635  
Fax: 989-893-9693

Environmental • Geotechnical  
[raudrilling@  
sbcglobal.net](mailto:raudrilling@sbcglobal.net)

351 North Tuscola Road  
Bay City, MI 48708

## EQ – THE ENVIRONMENTAL QUALITY COMPANY

Total Waste Management  
Industrial Cleaning  
Waste Treatment  
Transportation  
Remediation  
Recycling  
Waste Disposal  
Technical Services  
Emergency Response  
Wastewater Treatment



## EQ IS THE ANSWER

36255 Michigan Avenue  
Wayne, Michigan 48184  
(800) 592-5489 [www.EQonline.com](http://www.EQonline.com)



## WORKING TOGETHER TO PROTECT OUR ENVIRONMENT AND IMPROVE OUR HEALTH

### Pace Analytical: Providing Local and National Laboratory Coverage for Michigan

- Nationwide Coverage / Locations and Certifications
- Full Service Environmental Capabilities
- Major National Account Program Team
- "One Stop Shop" Services (e.g., air toxics, aquatic toxicity, dioxin analysis, low level mercury, radiochemistry and more)
- Federal and State Regulatory Knowledge
- Flexible Response to Demand
- Online Data Access and Management / PacePort
- On-time Delivery
- Innovative Test Reports and Specialized EDDs
- Single Point of Contact / Dedicated Project Management
- Customized Bottle Orders
- Convenient Courier Services
- Quality Systems Training, Audits (external and internal)
- Extensive Formalized Safety Program
- Continuous Improvement Training for Process, Productivity and Performance



Contact Dan Goeddeke  
Michigan Sales Representative  
Dan.Goeddeke@pacelabs.com  
PH: (248) 996-7244  
www.pacelabs.com



# EverydayBrilliance

Brilliant engineering solutions - delivered daily.



**NTH Consultants, Ltd.**

Infrastructure Engineering  
and Environmental Services

(800) 736-6842  
www.nthconsultants.com

NTH Consultants, Ltd. (NTH) employs a team of geologists, engineers, and regulatory professionals with extensive knowledge and experience in performing geologic, geotechnical, and environmental site investigations.

As a nationally recognized engineering firm, NTH has been specializing in geotechnical, environmental, and facilities engineering since 1968.



- Civil Engineering
- GeoEnvironmental & Remediation Services
- Geotechnical Engineering & Mining
- Insurance Services
- Water Resources

5892 Sterling Drive  
Howell, MI 48843

**877-550-4224**

For a growing list of office locations, please visit us online at [www.bcieng.com](http://www.bcieng.com).



## FONDRIEST

ENVIRONMENTAL MONITORING PRODUCTS

water quality • groundwater • hydrology • survey  
data logging • soil • weather • field gear

when your  
**research**  
demands  
**quality data**

888.426.2151 p  
937.426.1125 f  
[www.Fondriest.com](http://www.Fondriest.com)



Geotechnical & Environmental Drilling Services  
Since 1974

### MATECO Drilling

Introduces the  
Geoprobe® 8140 DT Rotary Sonic

- Impressive Power / Compact Package
- Powered with a Geoprobe® GV-4 Sonic Head
- Equipped with Remote Control and Rubber Tracks
- Handles 4x6 Tooling

800-968-3475 • [www.mateco.com](http://www.mateco.com)

## EDAC

ENVIRONMENTAL DRILLING  
AND  
CONTRACTING INC.

KIRK JOHNSON  
PRESIDENT  
4692 - 136th Avenue  
Holland, MI 49424

Ph. (616) 738-9300  
Cell (616) 403-6723  
Fax (616) 738-8135  
email: [edac@tds.com](mailto:edac@tds.com)

## Aqua-Tech CONSULTANTS

540 Leonard NW, Suite G  
Grand Rapids, MI 49504  
(616) 458-7980  
(800) 793-4565  
Cell: (616) 299-0136

[www.aqua-techconsultants.com](http://www.aqua-techconsultants.com)  
[lawm@aquatechconsultants.com](mailto:lawm@aquatechconsultants.com)

Lawrence M. Austin, CPG  
President

*Environmental & Hydrogeological  
Assessment and Remediation*



# RENTALS • SALES • SERVICE



## A sample of our rental inventory:

- GPS
- Groundwater Sampling Equipment
- PIDs/FIDs
- Soil Sampling Kits
- Toxic Gas Monitors
- XRF Guns for Soil Sampling
- And much more!!

To view our complete inventory on line please visit  
[www.ashtead-technology.com](http://www.ashtead-technology.com)

**Call us toll-free 800-242-3910**

*The Ashtead office servicing your area is located at:*

Park 100 7144 Zionsville Rd., Indianapolis, IN 46268 • 317-238-3441



**Fibertec**  
environmental  
services

# Fibertec

## The Choice of Environmental Professionals

- » Analytical Laboratory
- » Geoprobe/Subsurface Investigations
- » Industrial Hygiene
- » NELAC Accredited
- » Electronic Data Deliverables (EDDs)
- » Private Utility Locating

Holt • Brighton • Cadillac (517)699-0345 [www.fibertec.us](http://www.fibertec.us)



YOUR LAB OF CHOICE

**Founded 1970**

**We are the largest and most certified single location environmental lab in the US**

**Analytical Services**

**Water - Drinking Water - Mold**

**Soil/Solid Waste - Biological - Air**

**NELAP, A2LA, AIHA, Corps of Engineers**

**IHLAP, ELLAP, EMLAP, USDA**

**Internet Access - Password Protected Web Site**

**Custom Sampling Kits - Saturday Receiving**

ESC Lab Sciences is equipped and certified to support your work nationwide from one location.

ONE phone call, ONE point of contact, ONE laboratory.

No other lab is as accessible or prepared to handle your needs throughout the country.

Our presence is nationwide, but our imprint is green. ESC Lab Sciences is setting the industry standard in deploying sustainable practices, including energy efficiency and solvent recovery.

Please Contact Duane Hattem at (616) 307-1587 or [dhattem@esclabsciences.com](mailto:dhattem@esclabsciences.com)

[www.esclabsciences.com](http://www.esclabsciences.com)



6215 Lehman Drive  
Flint, MI 48507

Ph# (810) 877-7176 Fax # (810) 877-7156

**Boart Longyear is a one stop shop for all your drilling needs.**

- Environmental Drilling Services
- Geotechnical Drilling Services
- Mineral Exploration
- Aggregate Exploration
- Pump Services
- Offices Nationwide/Worldwide

**Flint, MI Equipment List**

- (4) 6600 Geoprobe® (Truck and Track Mounted)
- (1) BK-81 Truck Mounted H S A Drill (4.25" to 12.25" H S A's)
- (2) Tight Access 5400 Geoprobe® machines
- (3) Track Mounted Mini Sonic Drills capable of 6" dia. to 150' TD and 10" diameter to 50'.
- (2) Track Mounted Full Size ATV Sonic Drills capable of 6" dia. to 600' depths and up to 12" diameter up to 100' depths.
- (2) Truck Mounted Full Size Sonic Drills capable of 6" dia. to 600' depths and up to 12" diameter up to 100' depths.
- (2) VacMaster 1000 (Air Knives)

# AIPG – Seventh Annual AIPG Michigan Section Golf Outing Tuesday May 10, 2011

## Sponsor Information

### **Exclusive Dinner Sponsor- \$1,250**

#### **Investment includes:**

- 1 foursome
- Signage at club house and lunch area
- Corporate recognition\*

### **Beverage Cart/Oasis Sponsors - \$550 (2)**

#### **Investment includes:**

- Signage at the club house and on the Beverage Cart.
- Corporate recognition\*

### **Luncheon Sponsors - \$550 (2)**

#### **Investment includes:**

- Signage at the grill.
- Corporate recognition\*

### **Hole-in-one Sponsors - \$400 (4)**

Will have visible exposure on ALL Par 3 Holes.

If a golfer hits a hole-in-one, the prize will be, either \$10,000, a golf vacation or a deluxe set of irons.

### **Tee Sponsor - \$200**

(18) Available

#### **Investment includes:**

- Tee box signage
- Corporate recognition\*

### **Skill Sponsors – \$375**

#### **Investment includes:**

(6) Available

"Longest Drive" "Closest to Pin" awards to male/female for each.

Putting contest for \$\$, Signage on the hole or putting area, corporate\* recognition during the event (includes contest coordination at the turn).

### **Goodie Bag Sponsor - \$100 plus 144 goodie bag items**

\*Dinner and Beverage Cart/Oasis Sponsors will receive AIPG membership. All sponsors will be recognized in the Quarterly News letter and on the Michigan Section Web Site through November 2011.

**This event is our annual Fundraiser. The Michigan Section of AIPG Golf fundraiser benefits the Michigan Section's ability to support K-12 education grants and scholarships.**

**Place: Lyon Oaks Golf Course**

<http://www.oakgov.com/parksrec/ppark/lyon.html>

**Event: 18-hole Scramble**

**Date: May 10, 2011 Tuesday**

**Registration: 8:00 to 9:30 AM**

**Tee Time: 9:30 AM**

*Rainout Date: May 12, 2011 (based on course availability).*

Includes: Continental Breakfast, greens fees, cart, range balls, lunch on the course, networking opportunities, and PRIME RIB Dinner.

50-50 raffle, and raffle the grand prize HDTV along with other prizes, "\$10,000 Hole in One" Ace, Trips, Putt for \$2,500, men's and women's longest drive and closest to pin contests, \$20 gas cards to the four golfers traveling the furthest and goodie bag for all golfers.

***Golfer Sign-up Due:  
April 29, 2011***

## Registration

Individual = \$130 Team = \$480 (4 players)

Player One: \_\_\_\_\_

Player Two: \_\_\_\_\_

Player Three: \_\_\_\_\_

Player Four: \_\_\_\_\_

**Contact Name, Company and Phone Number for your Foursome:**

**Accepted forms of payment include:**



or



or



**Make Checks to:**

**Michigan Section-AIPG  
C/O GEO-environmental Resources, Inc.  
2531 Jackson Road  
Suite #164  
Ann Arbor, Michigan 48103**

**Contact:**

Kevin Lund [klund@g-eri.com](mailto:klund@g-eri.com)

Bob Reichenbach [bob@ergrp.net](mailto:bob@ergrp.net)

CALL or FAX to reserve your place!

**888-417-4440**

The AIPG-MI Section is a nonprofit 501(c)(6) Organization

# AIPG – Seventh Annual AIPG Michigan Section Golf Outing

## Tuesday May 10, 2011



Arthur Hills-designed  
18-hole course on 230  
acres

- "Up North" feel in southwest Oakland County
- Par-72 championship golf course
- Get in the game faster - play afternoons 12:30 - 3:30 p.m.
- Hardwood forests and wetlands enhance natural golfing experience

- "Nature, Of Course!" interpretive signs along cart paths point out natural features of interest or significance
- Wide fairways enhance playability
- Wetlands and ponds increase challenge of play
- Sand bunkers and freshwater lakes provide a strategic challenge for accomplished golfers
- Multiple tees on every hole make the course playable and enjoyable by all level players
- State of the art practice facility with target greens and sand traps
- Picturesque clubhouse with expansive views of the course accommodates parties of up to 450 for wedding receptions, banquets and educational meetings
- [Lyon Oaks County Park](#)'s day-use area features a 13-acre Dog Park and 2.5 miles of hiking trails
- Day-use park area also includes a picnic shelter, playground and recreational fields
- Trail head and parking for Lake Community Trail

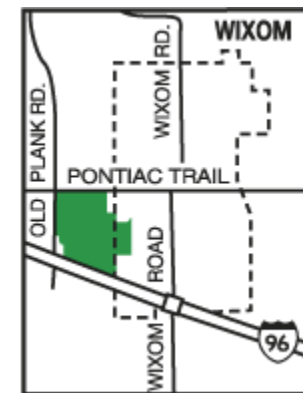
### Accolades

- Included in 2008 The Oakland Press' "*Ten to Try This Summer*" listing of Oakland County Public Golf Courses
- Member of *Arthur Hills Golf Trail*, featuring acclaimed Art Hills courses throughout the state
- Garnered a 4.5 star rating by *Golf Digest 2007* and named the #2 course in Detroit to

play in ESPN's *Sports Travel Golf Course Guide* of the Best Places to Play

- Named #4 in Jeff Lesson's Top 10 Public Golf Courses in southeast Michigan. (Lesson hosts "*Lesson on Golf*" on WXYT and WWJ radio stations)
- Named in 2005 Detroit Free Press *Top 10 Public Courses*

Yardage	GAM Ratings
Black - 6837	Men's Black Tee - 72.7, Slope 137
Blue - 6427	Men's Blue Tee - 70.7, Slope 133
White - 6133	Men's White Tee - 69.3, Slope 131
Gold - 5389	Men's Gold Tee - 65.6, Slope 115
Green - 4525	Women's White Tee - 75.5, Slope 145
	Women's Gold Tee - 70.8, Slope 131
	Women's Green Tee - 66.7, Slope 112



**Michigan Chapter  
American Institute of Professional Geologists  
MEETING ANNOUNCEMENT**

**May 19, 2011**

**REGULATORY RESPONSE IN MICHIGAN OIL AND GAS PRODUCTION  
DUE TO THE COLLINGWOOD SHALE DEVELOPMENT**

Featured Speakers:

[Rick Henderson](#) – Office of Geological Survey – Cadillac District Supervisor

[Susanne Biteman](#) – Office of Geological Survey Area Geologist – Cadillac District

[Bill Duley](#) – Office of Geological Survey Area Geologist – Cadillac District

**Location:** Radisson GR Riverfront, 270 Ann Street, Grand Rapids, MI (Map attached)

**Cost:** Students Free, Members \$35.00, Non-members \$40.00 **Registration is payable at the door by cash or check; however, prepayment is preferred and speeds up the check-in process at the door.**  
*Please note: Cancellations made within 24 hours of the meeting and/or “No Shows” will be charged and expected to pay the registration fee.*

**Dinner:** Buffet

**Time:** Cash Bar 5:30-6:30 PM, Dinner 6:30 PM, and Speaker 7:30-8:30 PM

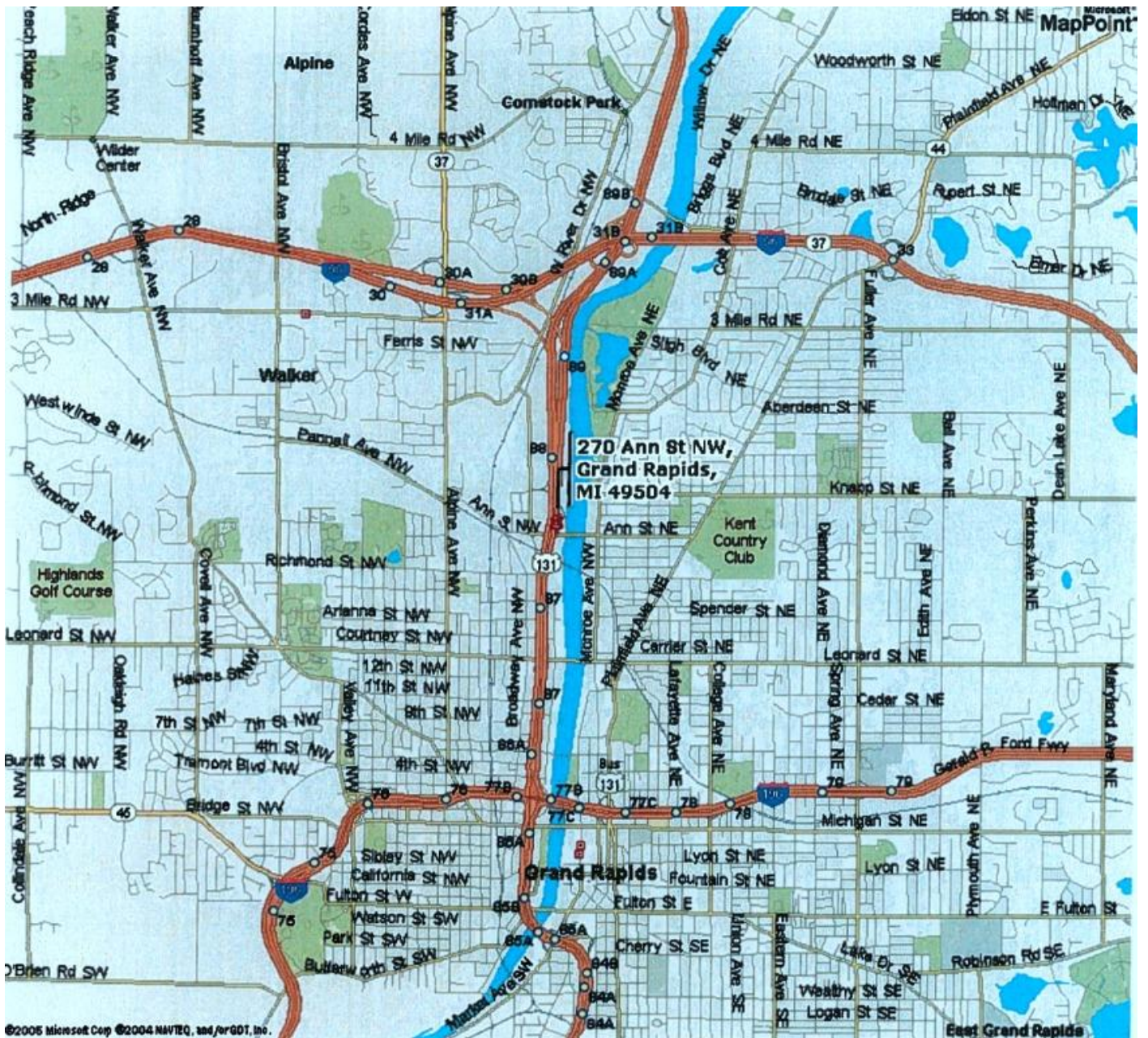
**RSVP:** Craig Savage, at [csavage@gfnet.com](mailto:csavage@gfnet.com) no later than May 17, 2011. Please include AIPG in the subject line. Checks may be mailed to Craig at this address: c/o Gannett Fleming of Michigan, Inc., 17901 Woodland Drive, Suites 900-1000, New Boston, MI 48164. Payment may also be made at the door.

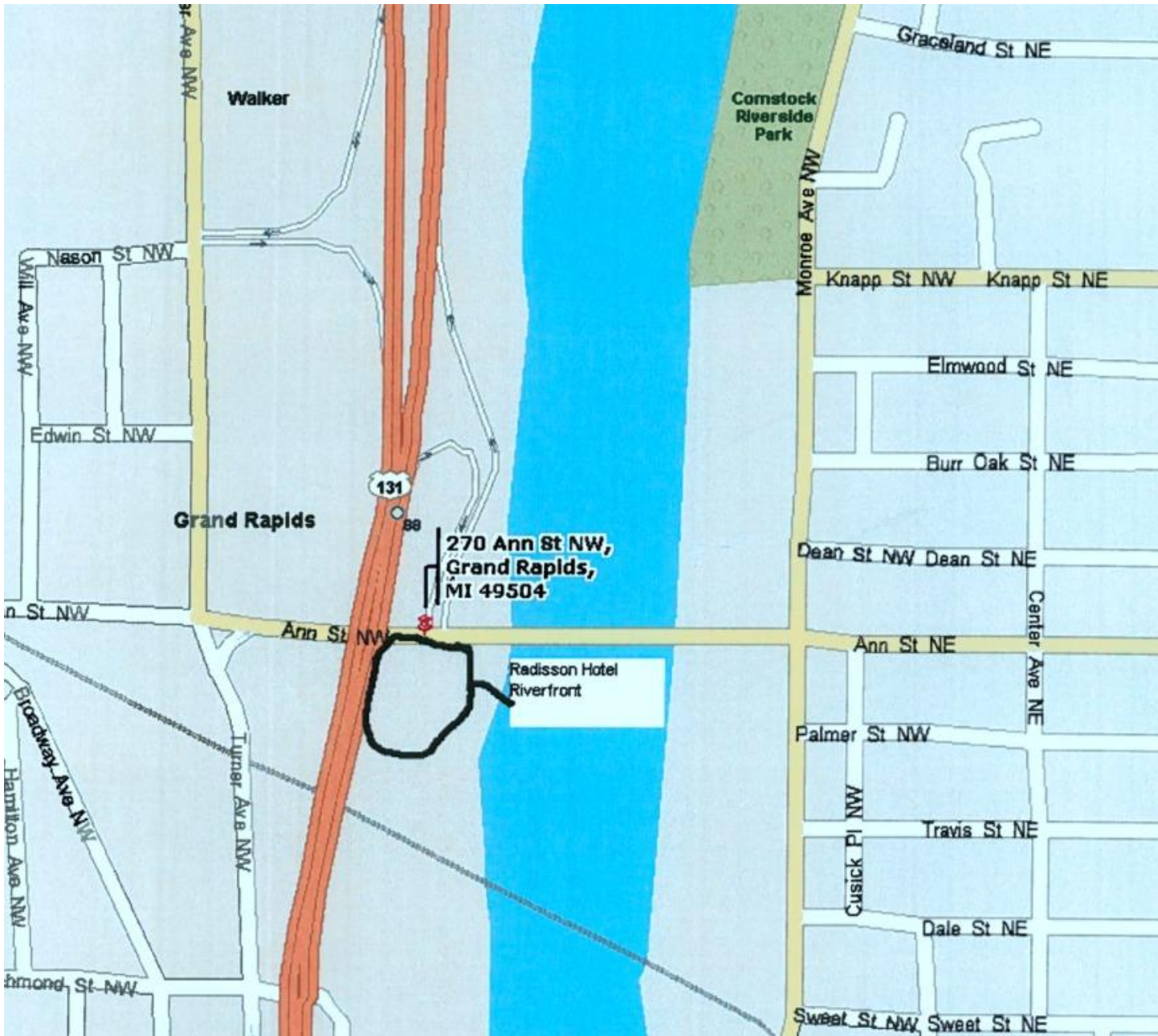
**Rick Henderson,** Rick graduated from Western Michigan University’s Department of Geology with a Bachelor of Science degree in 1978. Rick started with the Geological Survey Division as an Area Geologist in the Cadillac District in 1981. He served as a Geologist Specialist in the Region II Office in Roscommon and an Orphan Well Geologist. Rick was named the Cadillac District Supervisor in April of 1997.

**Susanne Biteman,** Ms. Biteman joined the Michigan Department of Environmental Quality, Office of Geological Survey – Cadillac District, as an Area Geologist in 2009. As an Area Geologist, Ms. Biteman’s primary responsibilities include permit application reviews, drilling inspections, field reviews, compliance inspections, enforcement, and spill response. Prior to joining the DEQ, Ms. Biteman was a Project Hydrogeologist for Malcolm Pirnie, Inc. (now ARCADIS U.S., Inc.). Ms. Biteman earned a M.S degree in Geological Sciences from Michigan State University in 2002 and a B.S. degree in Geological Sciences from Michigan State University in 2000.

**Bill Duley,** Bill is currently an Area Geologist for the MDEQ Office of Geological Survey (OGS) in Cadillac overseeing oil and gas exploration and production activities in Missaukee (where the Collingwood discovery well was drilled), Crawford and Roscommon Counties. Bill has worked for the state of Michigan for nearly 22 years as a geologist beginning his career in the Environmental Response Division then working in the Remediation and Redevelopment Division until transferring to OGS two years ago. Bill has been giving presentations to interest groups about the hydraulic fracturing of oil and gas wells.

# AIPG Section Meeting May 19, 2011





**Michigan Chapter  
American Institute of Professional Geologists  
FIELD TRIP ANNOUNCEMENT**

**AUGUST 12 & 13, 2011**

**NORTHEAST MICHIGAN KARST FEATURES –  
“INFLUENCES ON AND EFFECTS FROM BEDROCK TOPOGRAPHY,”  
ALPENA GLASS BOTTOM BOAT SHIPWRECK TOUR,  
AND ROCKPORT QUARRY**

**Locations:** Northeast Michigan Karst Stops, Alpena and Presque Isle County, Michigan  
Alpena Glass Bottom Boat Shipwreck Tour, 500 W. Fletcher Street, Alpena, Michigan  
Rockport Quarry, Rockport Road, Alpena, Michigan

*The AIPG Michigan Section is extending an invitation to all geologists, friends, and families to join us in a field trip to see the Karst features of northeastern Michigan, the Thunder Bay National Marine Sanctuary and Glass Bottom Boat Tour, and the Rockport Quarry Fossil Park.*

The field trip will kick off Friday at 10:00 a.m. with a driving tour of the Karst features in northeastern Michigan with several stops along the way including some hiking to view sink holes, earth cracks, and disappearing streams, etc.... DEQ geologists and local Karst experts Ty Black, David Lawrence, and Alexander Code will be our guides.

Saturday morning will begin at 10:00 a.m. with a brief visit to the Thunder Bay National Marine Sanctuary at the Maritime Heritage Center before we catch the Alpena Glass Bottom Boat Shipwreck Tour at 11:00 a.m.. The crystal clear waters and the large 'glass bottom' viewing wells allow you to dive the wrecks - without getting wet! The cruise is 2½ hours and we will experience magnificently preserved shipwrecks, scenic shorelines and majestic lighthouses. We will also learn about the history, legends and lore of Thunder Bay and many famous shipwrecks as we cruise the shoreline. The 65 ft. 'Lady Michigan' will take us on a comfortable adventure into the heart of Lake Huron's Shipwreck Alley. There boat tour also goes over the limestone ridges that affected shipping.

Following the boat tour, we will go to the Rockport Quarry to collect fossils from the Devonian Period. This section is particularly important since this is the only location where the whole section of the Rockport Limestone is exposed. The Rockport is abundant in fossils of brachiopods, crinoids, corals (excellent heads of hexagonaria), etc... Hopefully, the weather will be fantastic and everyone will be free to collect for the remainder of the day.

**Cost:** \$30.00 per adult and \$10.00 per child (ages 6-12) for the Glass Bottom Boat Tour. Children five and under are free on the boat. If we have more than 20 in our group, the price for adults will be \$27.00 and children ages 6-12 will be \$8.00. Meals are not included. Make your own arrangements for lodging. The link provides several locations for hotels or campsites in the area <http://www.alpenacvb.com>. The Holiday Inn is located at 1000 US-23 North, Alpena, 1-989-356-2151 or 1 (800) 315-2621 and the recommended campground is the Ossineke State Forest Campground on the shores of Lake Huron.

Join us and bring the family. It's going to be fun! A more complete itinerary will be sent to those who RSVP. Hope to see you this summer!

**For more info & RSVP:** Please contact Sara Pearson at [pearsons@michigan.gov](mailto:pearsons@michigan.gov) or (616) 356-0253 no later than July 25, 2011. If we have less than 10 RSVPs, we will cancel the trip.